








Let's get started

Estimated time **2 h 00**

This file includes all the patterns and tips to make the wallet as seen in the picture. As we are all unique and have our personal touch, I would love to see the result of your work once you are finished so feel free to share Pictures in the shop's comment section ;)

REQUIRED TOOLS

-  Your Hands
-  Leather / preferably vegetable tanned
-  Thread
-  Needle
-  Pricking iron

TIPS In order to make the edges you have two options the first as seen in my model is to use edge paint and the second is to use beeswax with an edge slicker.

INSTRUCTIONS

1 Printing the files at 100%

The first step and the most important is printing the files in the right size. This can seem very simple at first but as all our printers are configured differently, it's better to check if we have it right.

My files are created to be printed at 100% on A4 paper but just in case I include a printing guide of 1 cm and 1 inch you can compare to your ruler. In case it doesn't match, you can check in the printing preferences if there are any margins added and if so take them off as the files are made to fit perfectly on an a4 printing paper.

2 Cutting your leather parts by using the patterns

Once you figured out step one, you can start step two by placing the patterns on your leather and getting your best cutter or whatever you prefer using to cut the leather pieces out.

Regarding the thickness of leather to use, I put some instructions on each part of the pattern. These are only informative as you can select the size that suits you best ;)

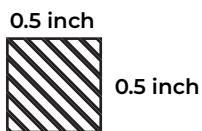
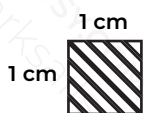
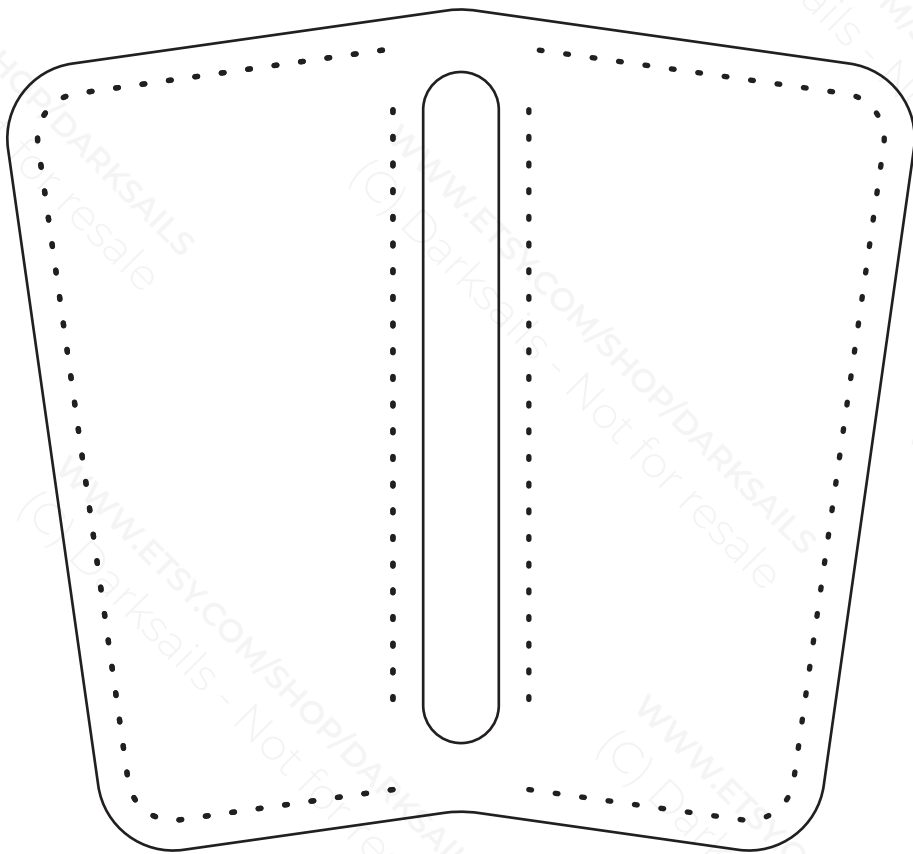
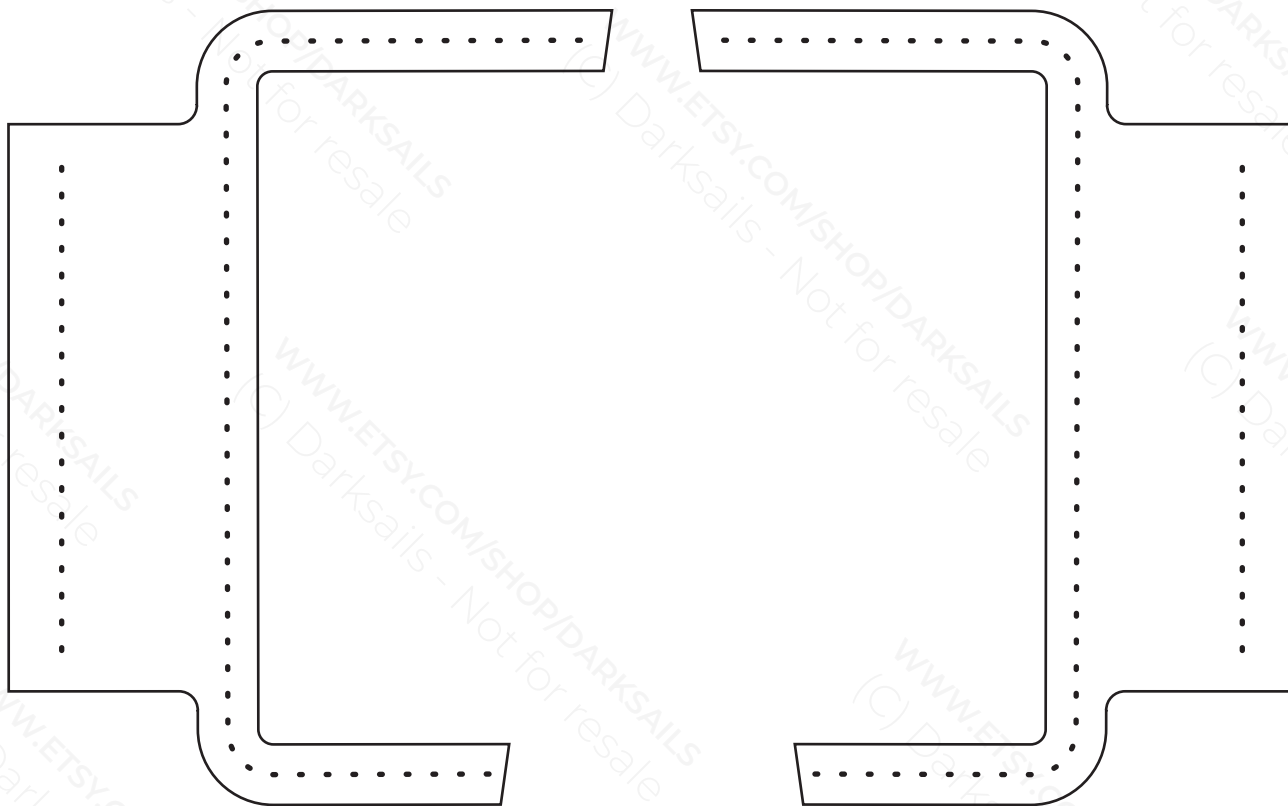
TIPS : For the round angles maybe you have a tool that can help out or else you can use a coin or any round object that can serve as a guide.

“ IT ALWAYS SEEMS IMPOSSIBLE UNTIL IT'S DONE ”

NELSON MANDELA

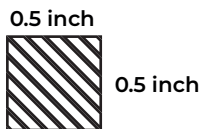
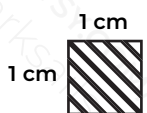
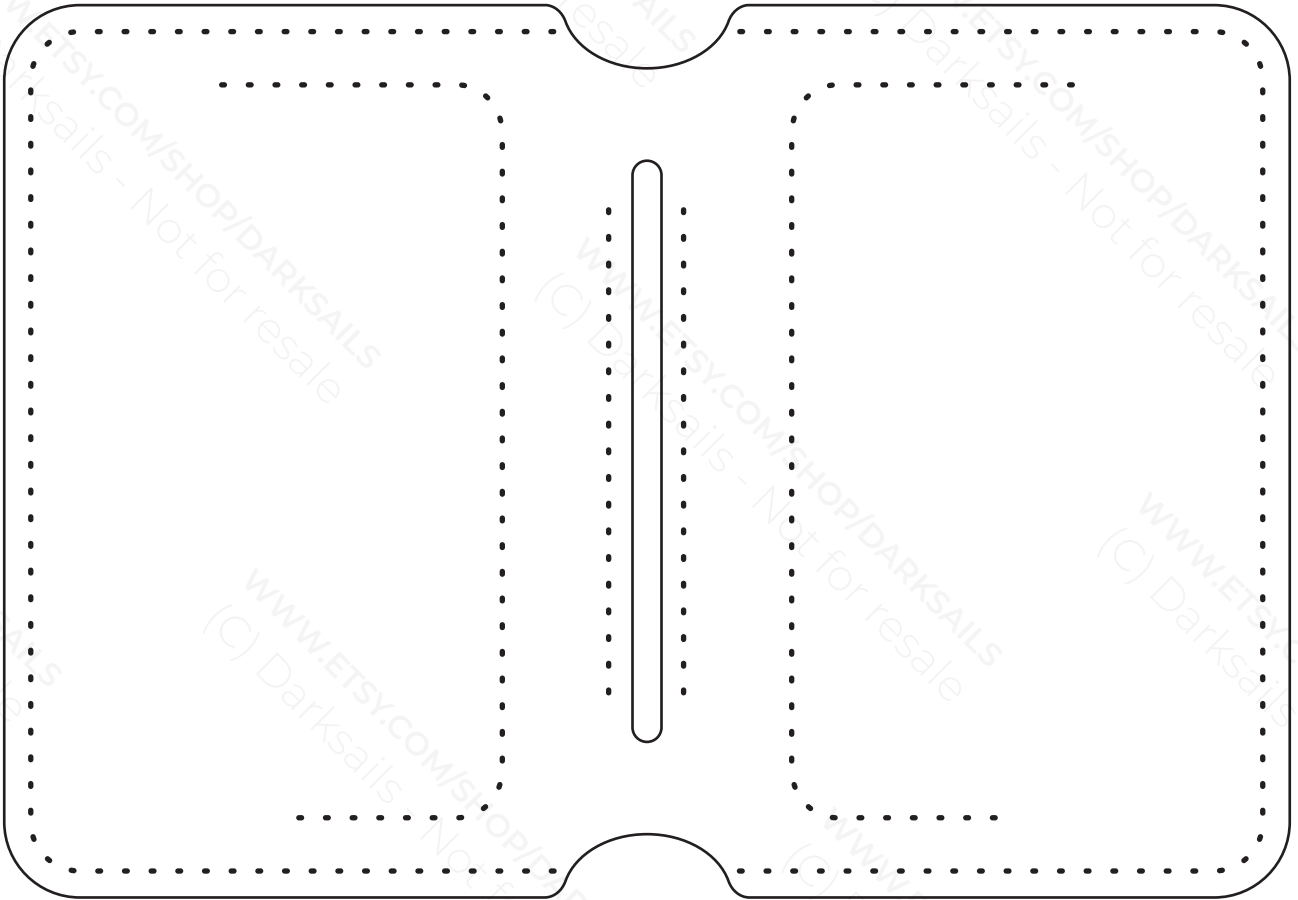
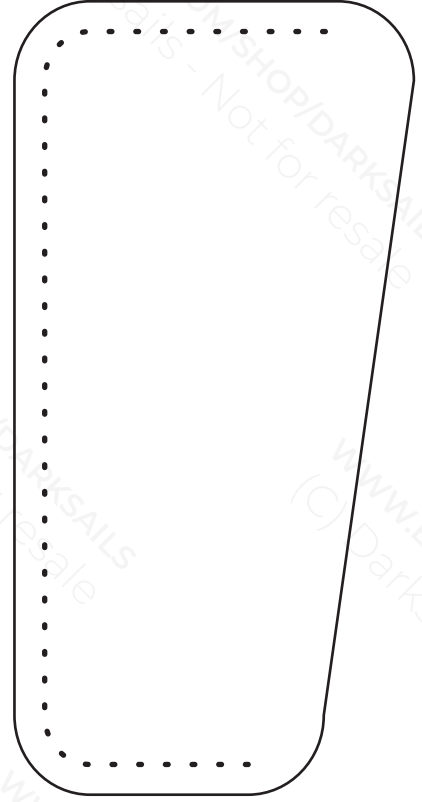
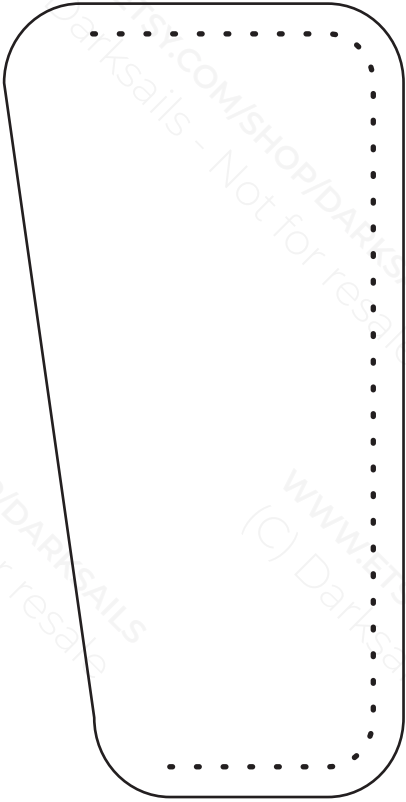
INTERIOR FLOP PATTERNS

Leather thickness : 1 to 1.5 mm



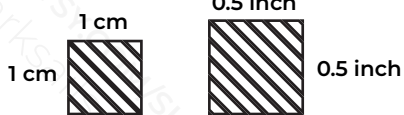
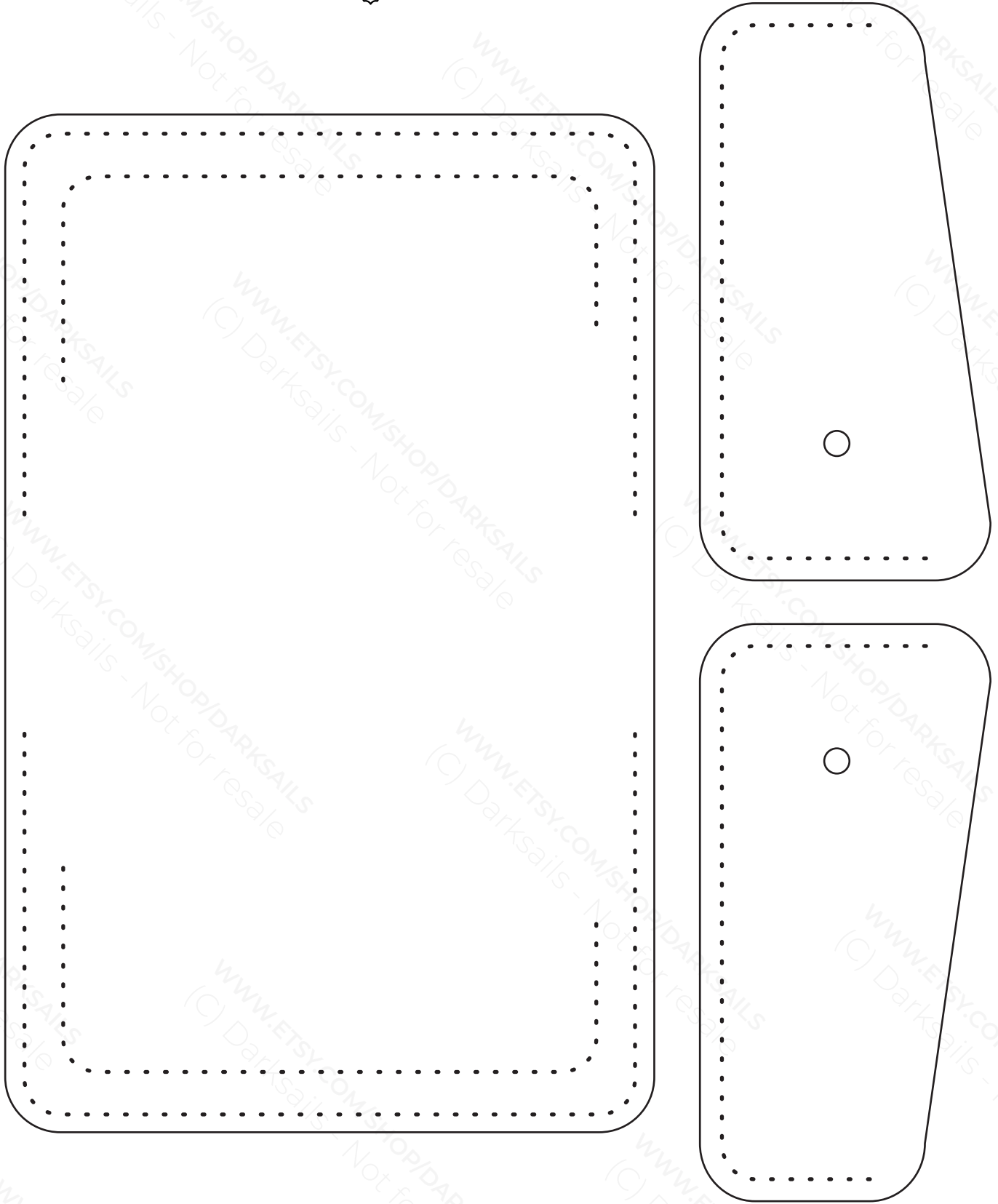
INTERIOR PATTERNS

 Leather thickness : 1 to 1.5 mm

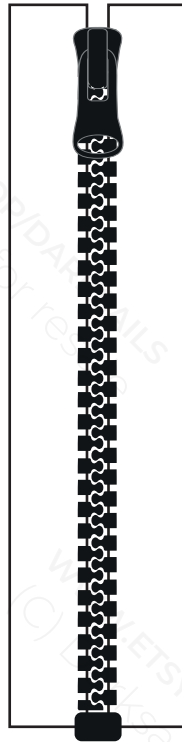
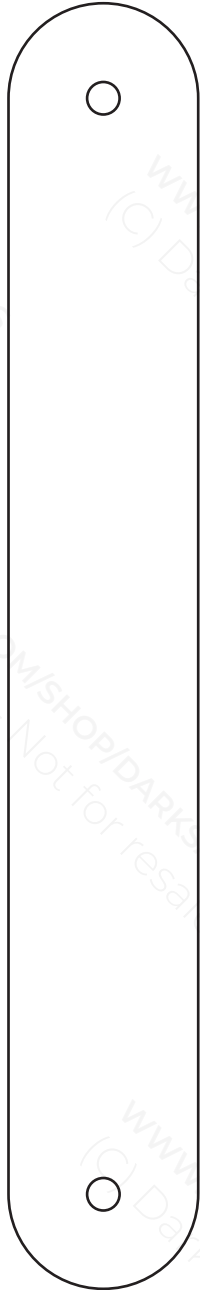


EXTERIOR PATTERNS

Leather thickness : 1.5 to 2 mm



STRAP PATTERN + ZIPPERS



9.5 CM



33 CM

1 cm



0.5 inch



0.5 inch