



## PRINTING INSTRUCTION

1. File > Print
2. Click on “Page Setup” button make sure your paper size is set to the paper size that you will print and Scale at 100%
3. In “Pages Sizing & Handling” click on “Size” button and select “Actual size”

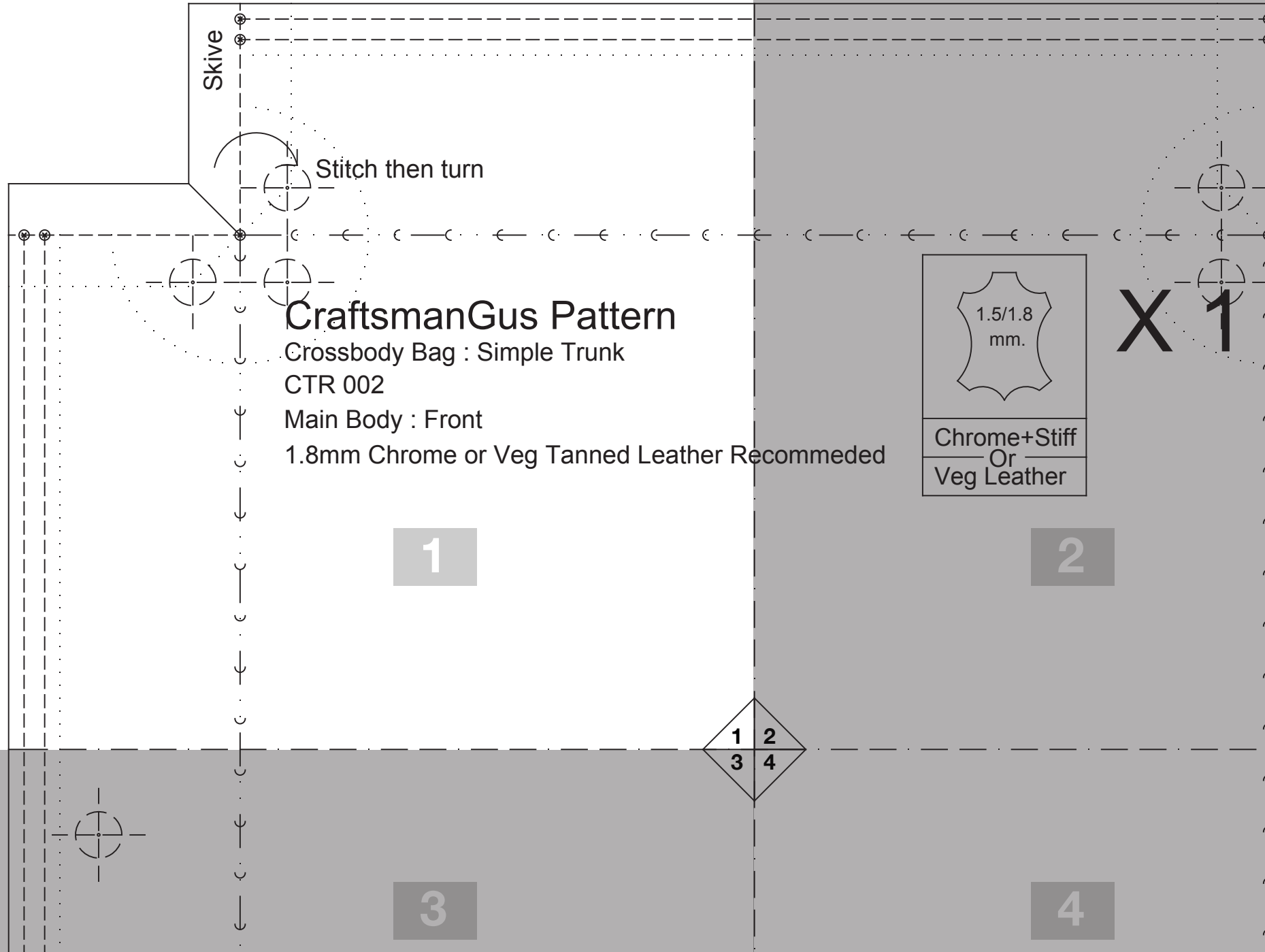
The image shows two screenshots of software dialog boxes. The left screenshot is the 'Print' dialog box. It has a 'Printer' dropdown set to 'FUJI XEROX DocuPrint CM215 fw...', 'Copies' set to 1, and 'Print in grayscale' unchecked. Under 'Pages to Print', 'All' is selected. In the 'Page Sizing & Handling' section, the 'Size' button is selected, and 'Actual size' is chosen. A red callout box labeled 'Select Actual size' points to the 'Actual size' radio button. Another red callout box labeled 'Set the paper size' points to the 'Page Setup...' button at the bottom. The right screenshot is the 'Page Setup' dialog box. It shows 'Settings' as 'Page Attributes', 'Format For' as 'Any Printer', 'Paper Size' as 'A4' (210 by 297 mm), 'Orientation' as 'Portrait', and 'Scale' as '100%'. A red callout box labeled 'Select the paper size' points to the 'Paper Size' dropdown menu. Another red callout box labeled 'Scale 100%' points to the 'Scale' input field.

### IMPORTANT NOTE:

- **ADOBE ACROBAT READER (FREE SOFTWARE)** is recommended to open and print the patterns

link for free download

<https://get.adobe.com/reader>





Stitch then turn

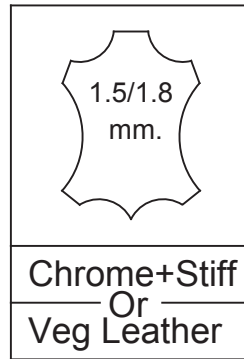
# CraftsmanGus Pattern

Crossbody Bag : Simple Trunk

CTR 002

Main Body : Front

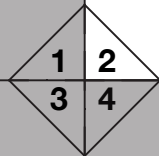
1.8mm Chrome or Veg Tanned Leather Recommended



X 1

1

2



3

4



1

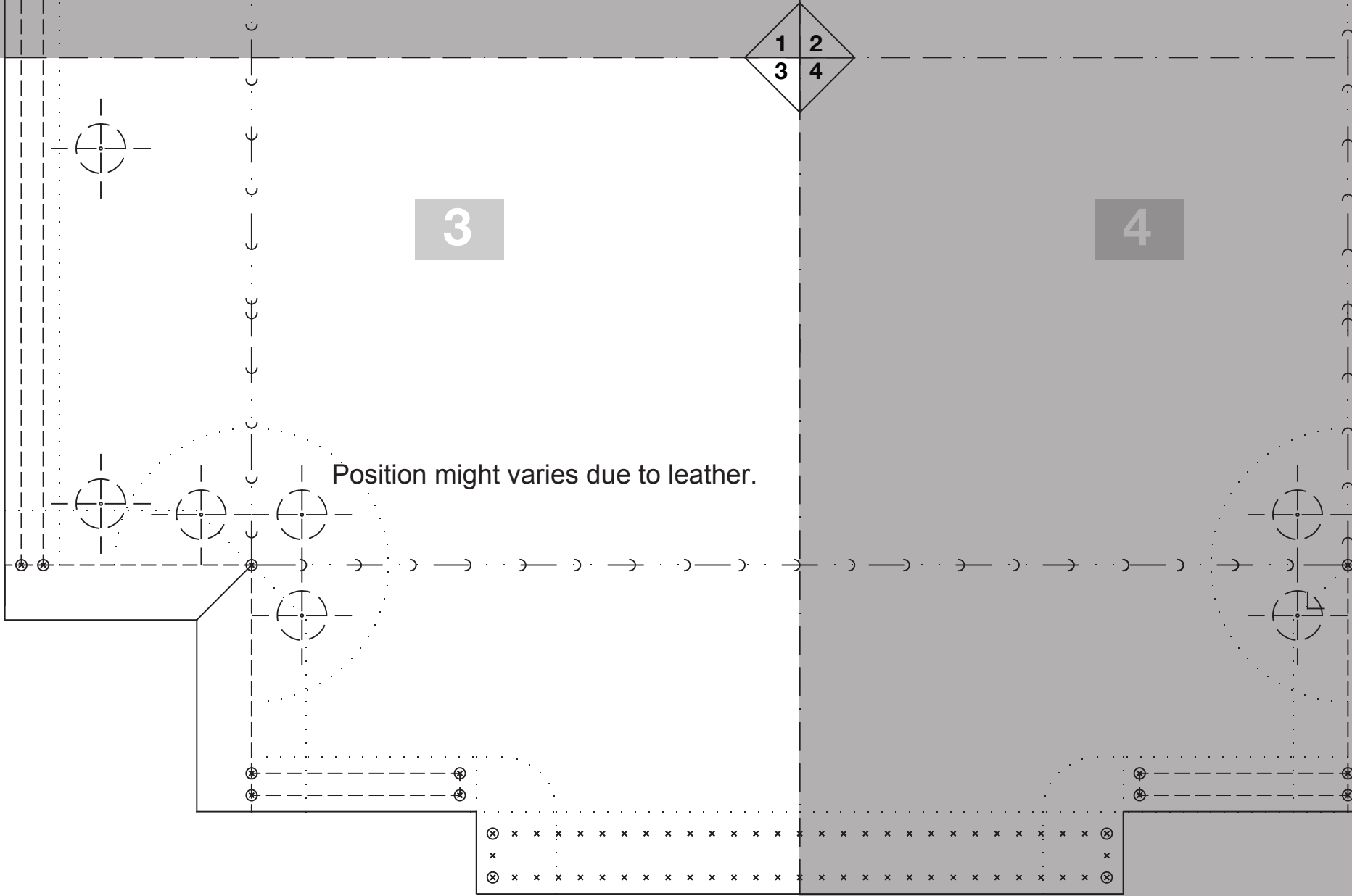
2

1 2  
3 4

3

4

Position might varies due to leather.



1

2



Simple Trunk  
Page 4 of 11

1

2

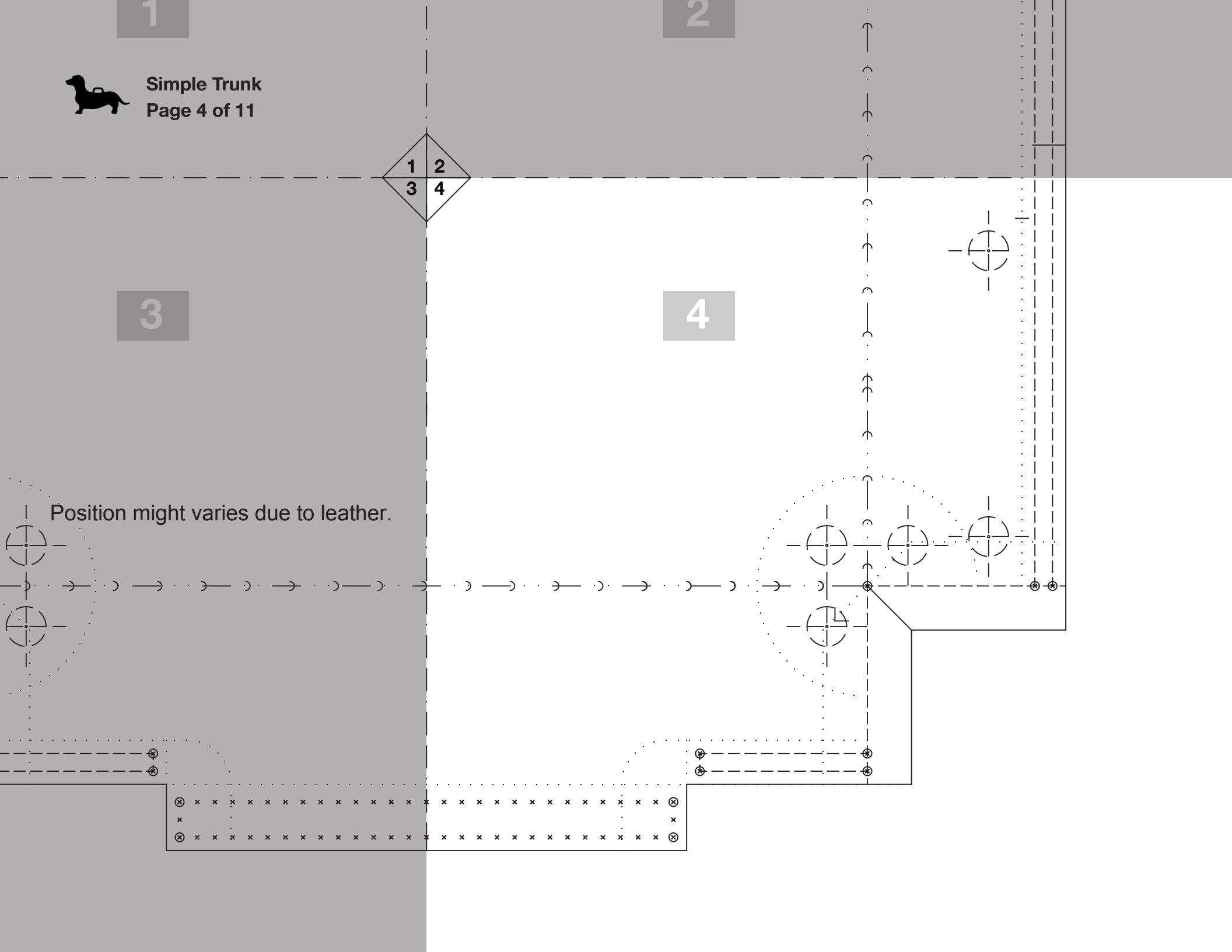
3

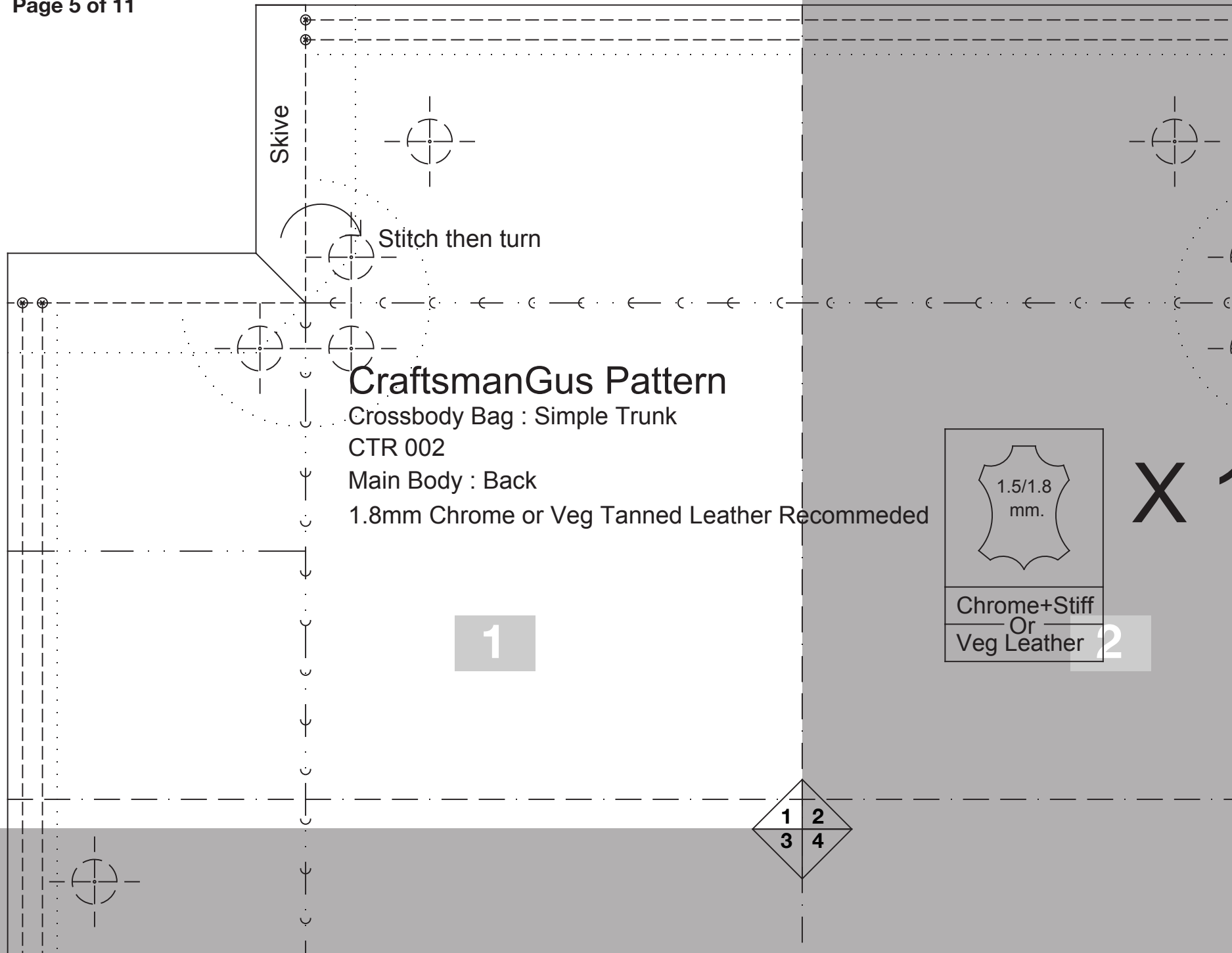
4

3

4

Position might varies due to leather.





# CraftsmanGus Pattern

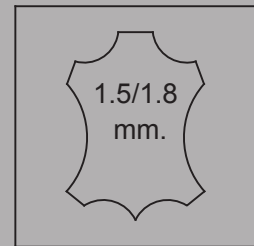
Crossbody Bag : Simple Trunk

CTR 002

Main Body : Back

1.8mm Chrome or Veg Tanned Leather Recommended

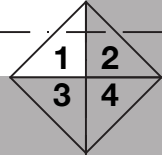
1



X 1

Chrome+Stiff  
Or  
Veg Leather

2





h then turn

# tsmanGus Pattern


ody Bag : Simple Trunk

02

ody : Back

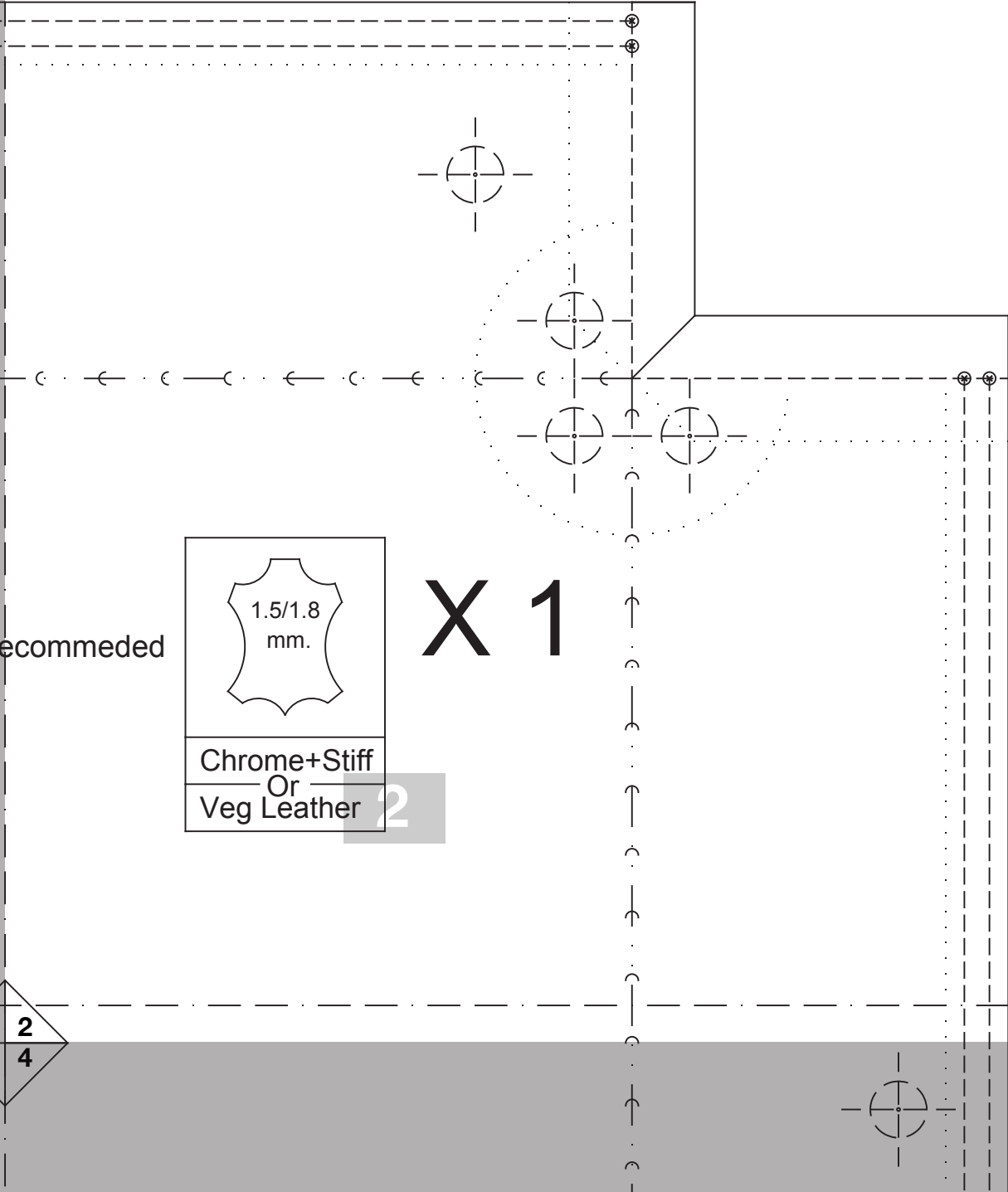
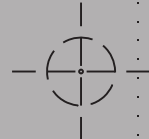
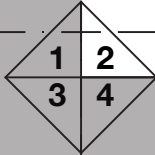
Chrome or Veg Tanned Leather Recommended

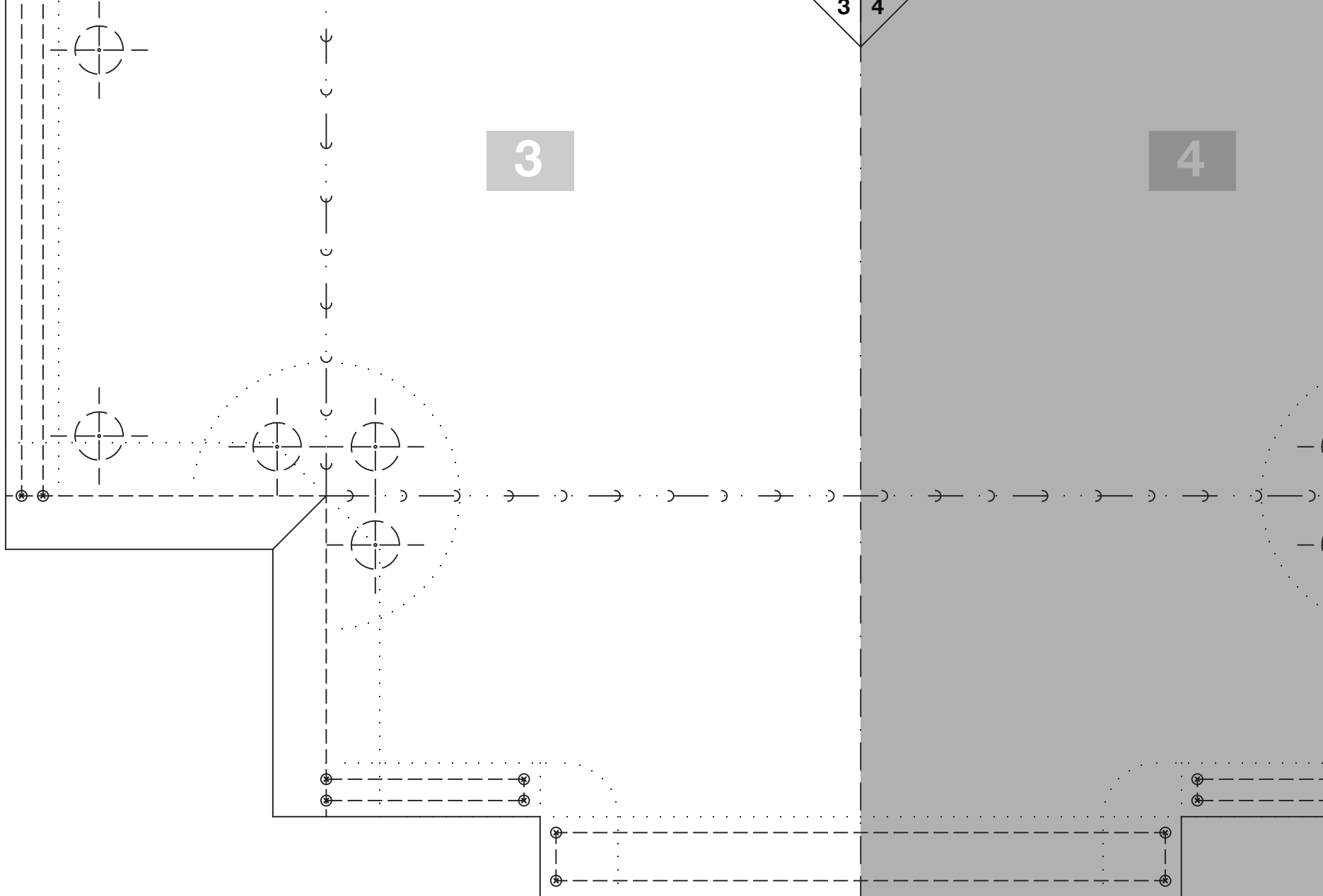
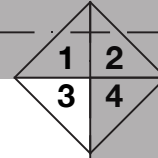
1

 1.5/1.8 mm.
Chrome+Stiff Or Veg Leather

X 1

2

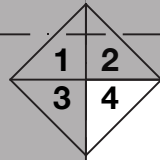




3

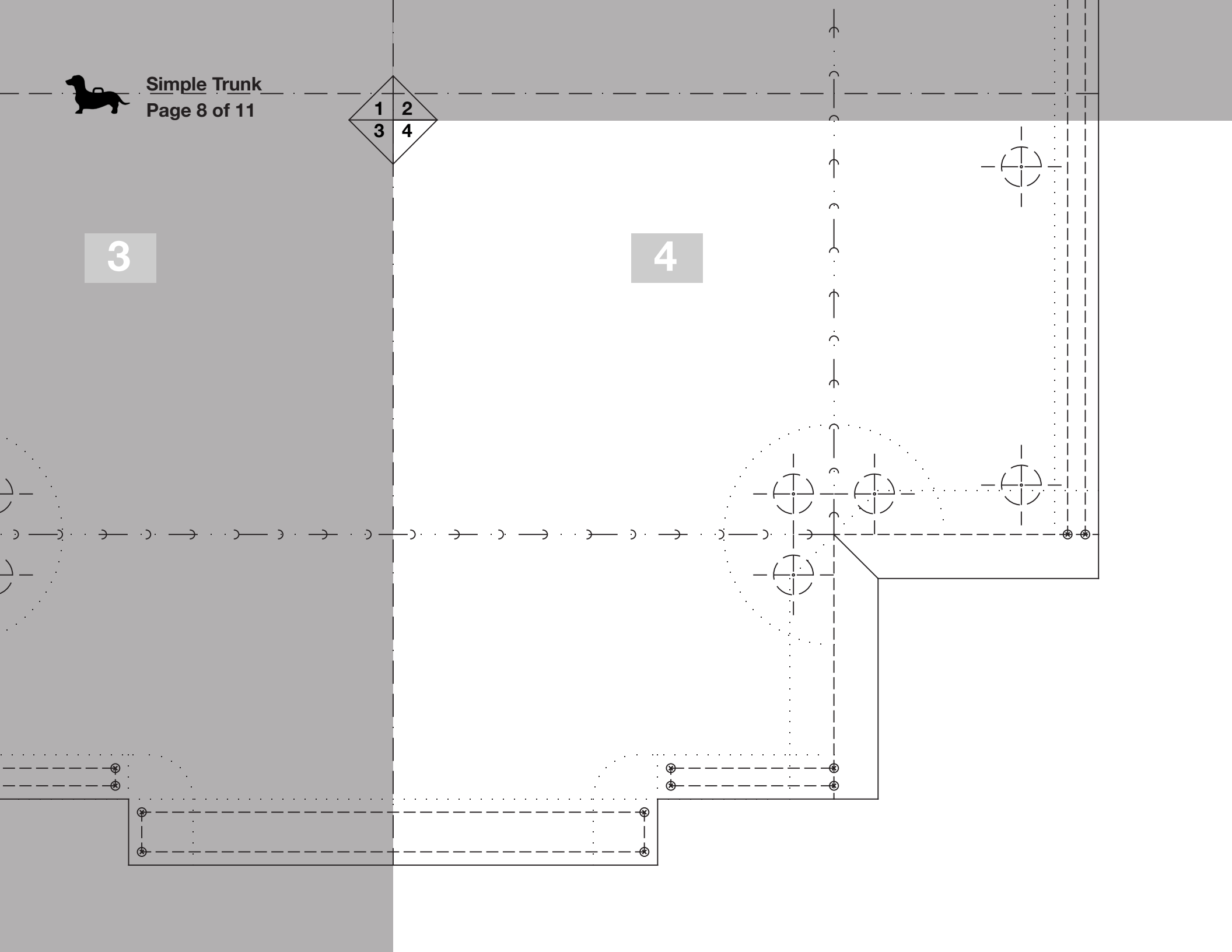
4



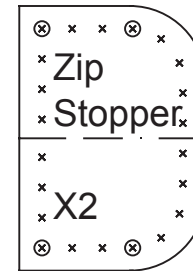


3

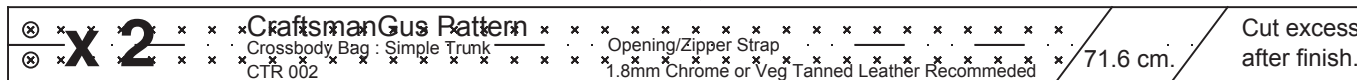
4





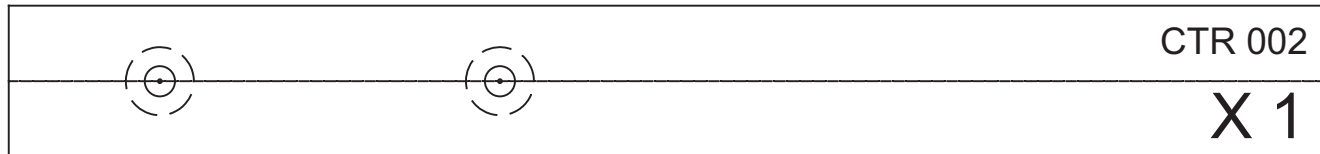
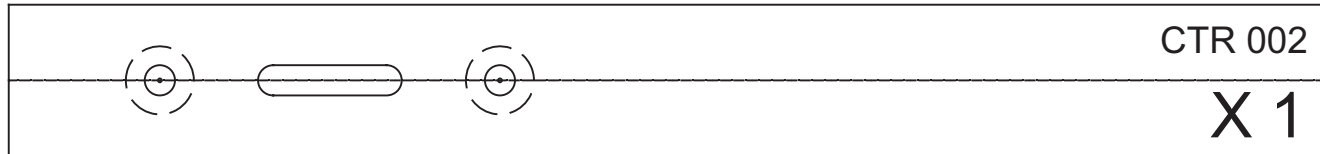


Cut the "Opening/Zipper Strap" to 1 cm x 71.6 cm





**BELT STRAP**



**Tile**

